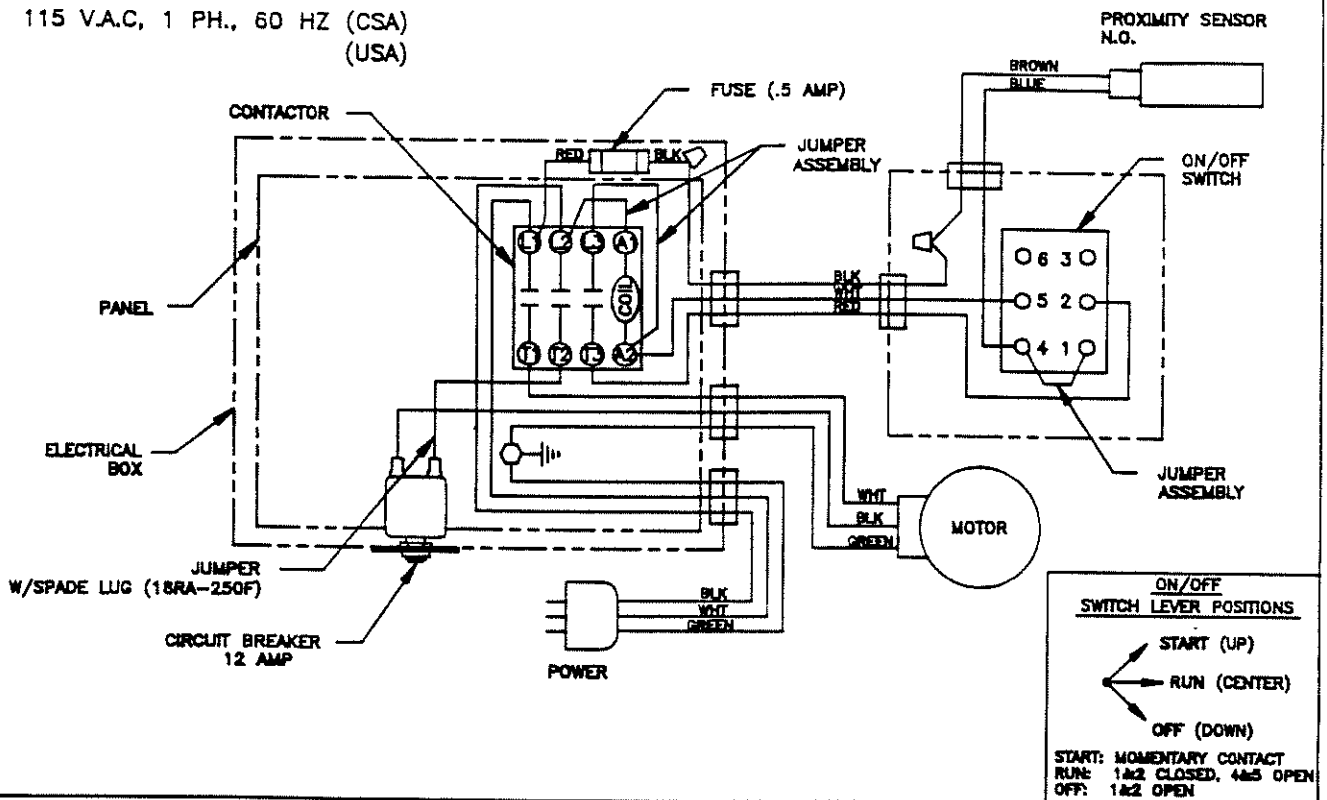
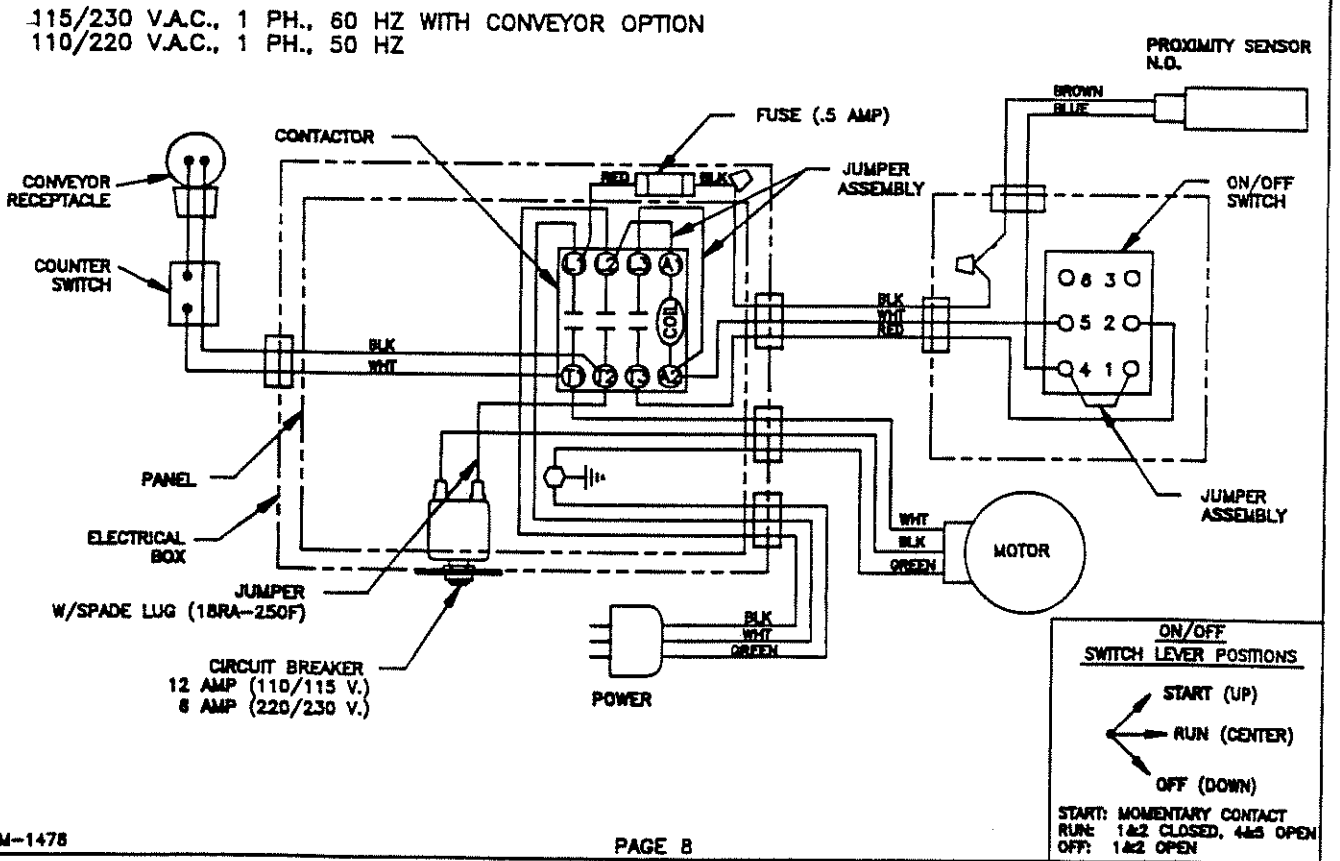


ELECTRICAL DIAGRAMS

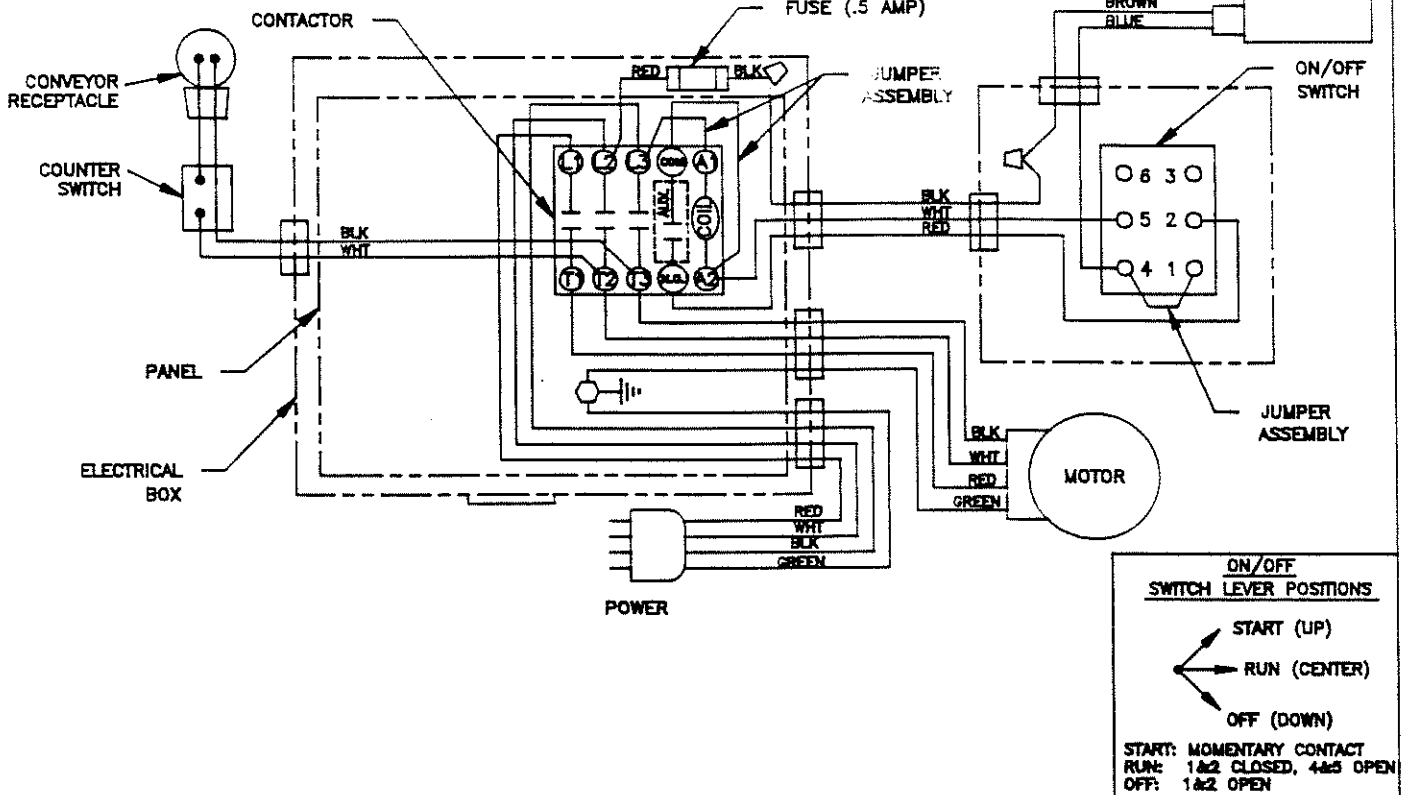
115 V.A.C., 1 PH., 60 HZ (CSA)
(USA)



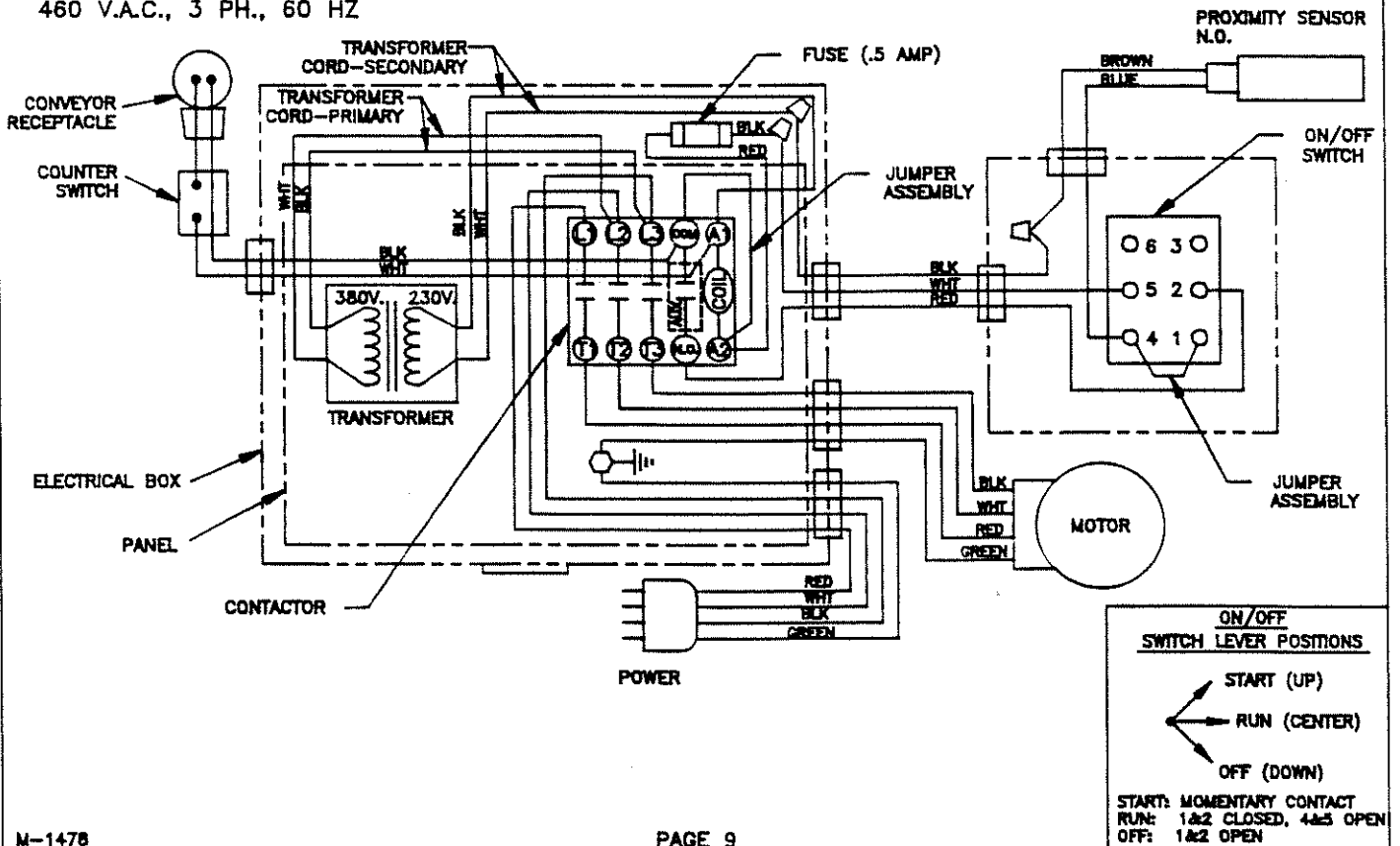
115/230 V.A.C., 1 PH., 60 HZ WITH CONVEYOR OPTION
110/220 V.A.C., 1 PH., 50 HZ



200 V.A.C., 3 PH., 60 HZ
 220 V.A.C., 3 PH., 50 HZ
 230 V.A.C., 3 PH., 60 HZ



380 V.A.C., 3 PH., 50 HZ
 460 V.A.C., 3 PH., 60 HZ



ELECTRICAL COMPONENTS

REVISED 2/85

115 V.
1 PHASE
50/60 HZ
(CSA)
(USA)

ITEM	PART NUMBER
POWER CORD ASSEMBLY	7080
PLUG	2685
CORD ASSEMBLY, MOTOR	7081
CORD ASSEMBLY, ON-OFF SWITCH	7082
JUMPER ASSEMBLY, SWITCH	7144
JUMPER ASSEMBLY, CONTACTOR	7572
JUMPER, W/SPADE LUG (18RA-250F)	7745
FUSE HOLDER ASSEMBLY	7669
INCLUDES:	
FUSE HOLDER	7671
CAP & FUSE (.5A)	7670
WIRE NUT	500-1375
CIRCUIT BREAKER (12A)	7793

200,220,230 V.
3 PHASE
50/60 HZ

ITEM	PART NUMBER
POWER CORD ASSEMBLY	7084
PLUG	100-0929
CORD ASSEMBLY, MOTOR	7017
CORD ASSEMBLY, ON-OFF SWITCH	7082
JUMPER ASSEMBLY, SWITCH	7144
JUMPER ASSEMBLY, CONTACTOR	7572
CONVEYOR RECEPTACLE	7042
FUSE HOLDER ASSEMBLY	7669
INCLUDES:	
FUSE HOLDER	7671
CAP & FUSE (.5A)	7670
WIRE NUT	500-1375

PAGE 10

230 V.
1 PHASE
50/60 HZ

ITEM	PART NUMBER
POWER CORD ASSEMBLY	7085
PLUG	500-1146
CORD ASSEMBLY, MOTOR	7081
CORD ASSEMBLY, ON-OFF SWITCH	7082
JUMPER ASSEMBLY, SWITCH	7144
JUMPER ASSEMBLY, CONTACTOR	7572
CONVEYOR RECEPTACLE	7042
FUSE HOLDER ASSEMBLY	7669
INCLUDES:	
FUSE HOLDER	7671
CAP & FUSE (.5A)	7670
WIRE NUT	500-1375
JUMPER, W/SPADE LUG (18RA-250F)	7745
CIRCUIT BREAKER (6A)	7794

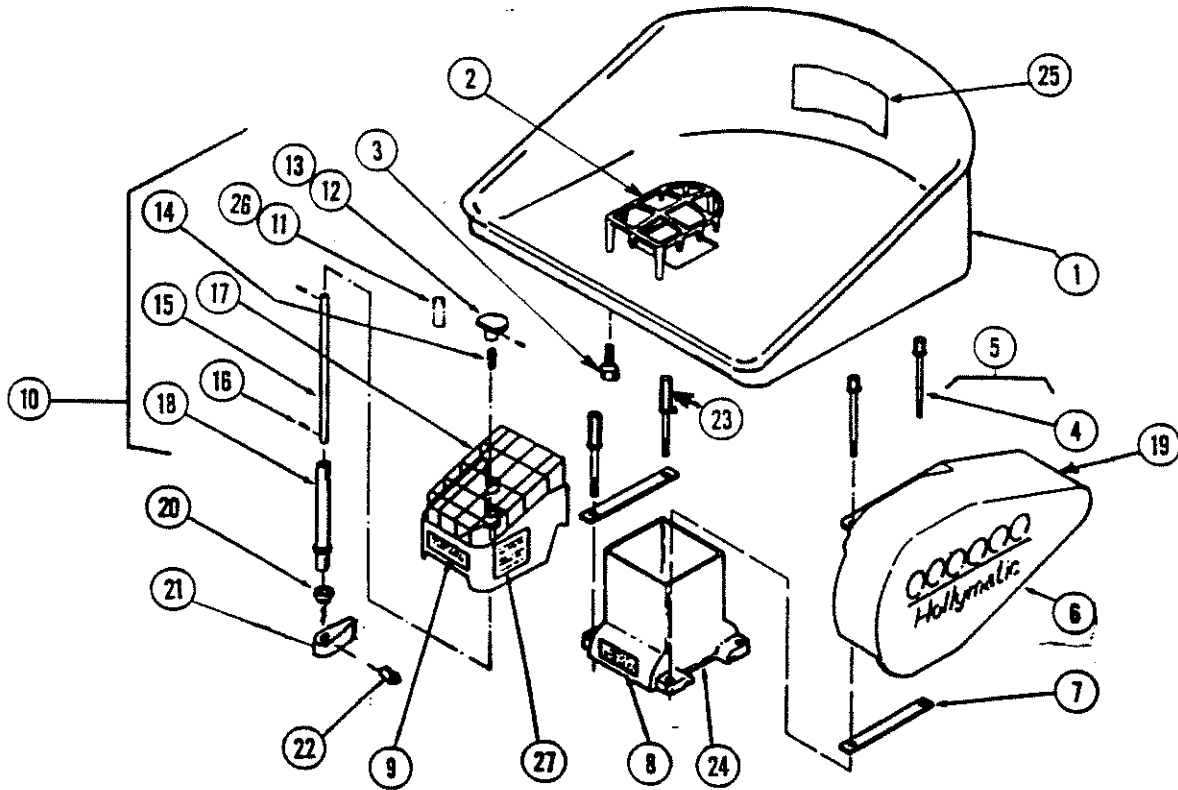
380,460 V.
3 PHASE
50/60 HZ

ITEM	PART NUMBER
POWER CORD ASSEMBLY	7087
PLUG	100-0917
CORD ASSEMBLY, MOTOR	7017
CORD ASSEMBLY, ON-OFF SWITCH	7161
JUMPER ASSEMBLY, SWITCH	7144
JUMPER ASSEMBLY, CONTACTOR	7572
CONVEYOR RECEPTACLE	7042
FUSE HOLDER ASSEMBLY	7669
INCLUDES:	
FUSE HOLDER	7671
CAP & FUSE (.5A)	7670
WIRE NUT	500-1375
TRANSFORMER:	
380 V. PRIMARY	2691
440/460 V. PRIMARY	2689

CONVEYOR RECEPTACLE 110V 6012

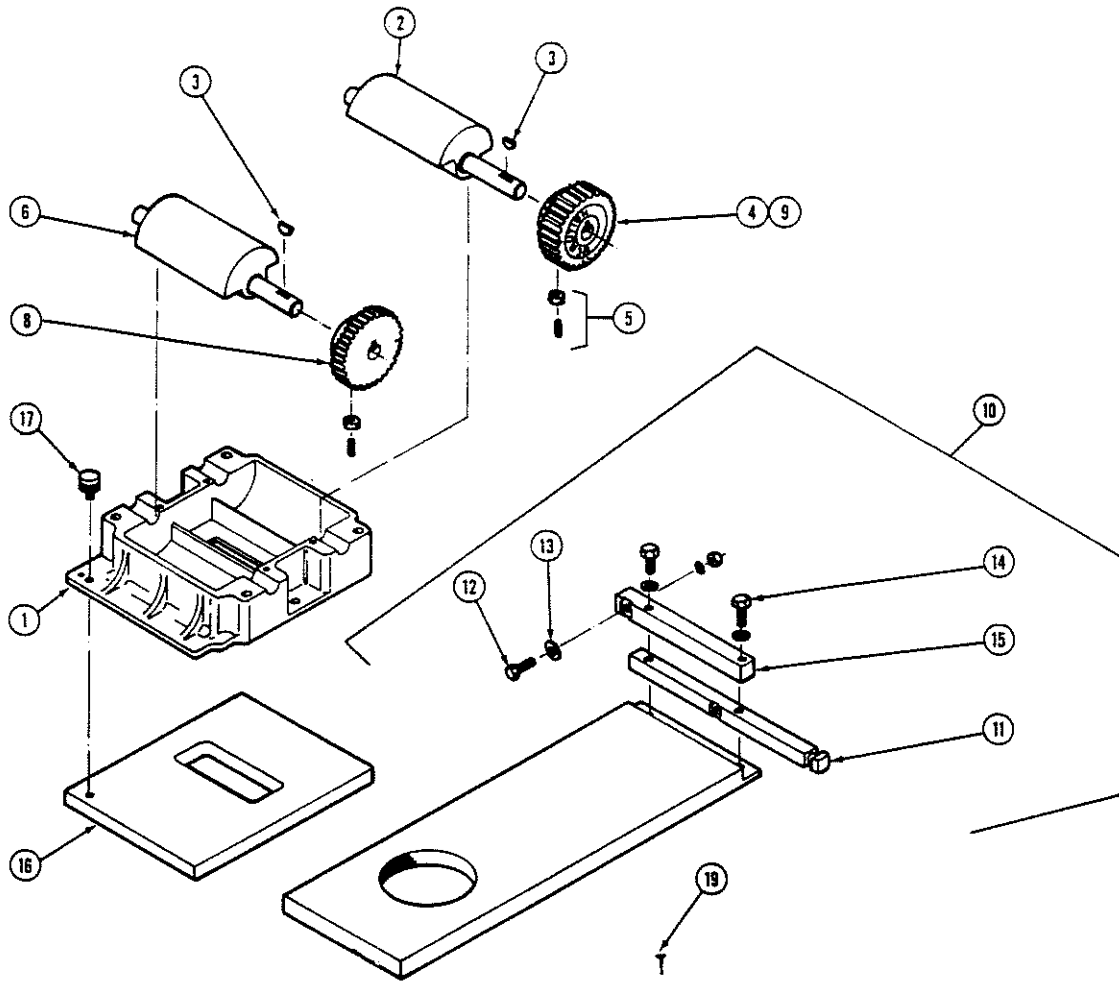
M-1476

HOPPER TOP



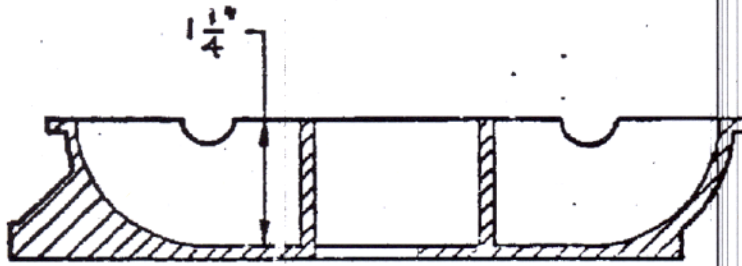
<u>ITEM</u>	<u>QTY</u>	<u>PART NUMBER</u>	<u>ITEM</u>	<u>QTY</u>	<u>PART NUMBER</u>
1 Feed Tray (Incl. #2, 3):			11 Actuator, Large F.T.	1	7006
Large	1	7421	12 Actuator, Small F.T.	1	2744
Small	1	7139	13 ROLL Pin 1/8 x 3/4	1	762 0616 91
2 Guard:			14 Spring	1	7005
for Large Feed Tray	1	7680	15 Rod, Actuator	1	7677
for Small Feed Tray	1	2425	16 Roll Pin	2	7022
3 Drilled Spanner Screw:			17 Guard Assy, M P	1	7047
for Large Feed Tray	1	7767	18 Post	1	7673
for Small Feed Tray	1	2473	19 Label	1	900 0601
4 Hopper Bolt, Short Hex	2	2227	20 Bushing	1	2835
5 Gear Guard Assy:			21 Actuator, Safety Sw	1	7710
(Incl. #4, 6, 7, 19)	1	2625	22 Set Screw	1	714 0337 99
6 Guard			23 Bolt, Long Hex	2	2107
7 Bar, Hopper Bolt	2	2453	24 Hopper Top/Square	1	7113
8 Decal, Hopper Top	2	2252	25 Label, Caution	1	900 0623
9 Label, Caution	1	900 0621	26 Pad, Anti-vibration	1	7173
10 M.P. Guard Assy:			27 Label, Caution	1	900 0623
for Large F.T.	1	7150			
for Small F.T.w/o conv	1	7152			

HOPPER BOTTOM



<u>ITEM</u>	<u>QTY</u>	<u>PART #</u>	<u>ITEM</u>	<u>QTY</u>	<u>PART #</u>
1 Hopper Bottom	1		13 Spacer	1	2208
5 oz., low lip		2047	14 Bolt Assortment	2	
5 oz., grooved, low lip		2421	for 3/16 & 1/4 M.P.		2705
8 oz., high lip		2647	w/o ext. 1" long		
8 oz., grooved, high lip		2637	for 5/16 & 3/8 M.P.		2706
2 Compressor, Rear	1		w/o ext. 1 1/8" long		
for 5 oz. H.B.		2668	for 1/2 M.P.		2707
for 8 oz. H.B.		2688	w/o ext. 1 1/4" long		
3 Key, Woodruff	2	0493	for 3/16, 1/4 & 5/16 M.P.		2708
4 Gear, Rear Compressor	1	2021	w/ext. 1 1/2" long		
5 Set Screw & Locknut	2	2700	for 3/8 M.P.		2709
6 Compressor, Front	1		w/ext. 1 5/8" long		
for 5 oz. H.B.		2666	for 1/2, 5/8 & 3/4 M.P.		2710
for 8 oz. H.B.		2686	w/ext. 1 3/4" long		
8 Gear, Front Compressor	1	2022	15 Bracket, Extension	1	2049
9 Decal, Compressor Gear	1	2029	(for all Mold Plates)		
10 Mold Plate Assembly	A/R		16 Adapter Plate	1	
(Specify Size and Shape)			(Including lock screw)		
3/16		2231	for 3/16 M.P.		2551
1/4		2232	for 1/4 M.P.		2552
5/16		2233	for 5/16 M.P.		2553
3/8		2234	for 3/8 M.P.		2554
1/2		2235	for 1/2 M.P.		2555
5/8		2236	for 5/8 M.P.		2556
3/4		2237	17 Lock Screw/Adapter Plate	1	2547
11 Bracket, Mold Plate	1	2052	19 Pin for 8 oz. 3/4 M.P.	3	2038
12 Stop Screw Assortment	1	2209			

HOPPER BOTTOM



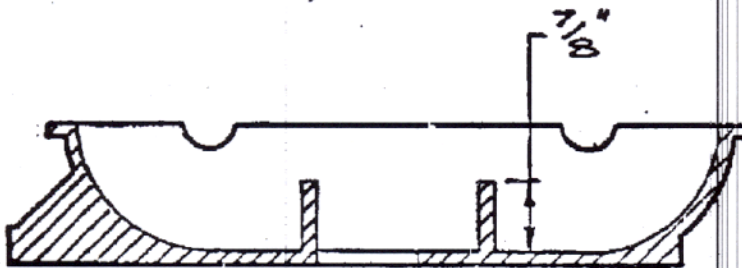
8 Oz. Hopper Bottom, ungrooved- 2647

8 Oz. Hopper Bottom, grooved- 2637

8 Oz. Hopper Bottom, ungrooved, for
pinned adapter plate- 7252

8 Oz. Hopper Bottom, grooved, for
pinned adapter plate- 7238

for Wendy's



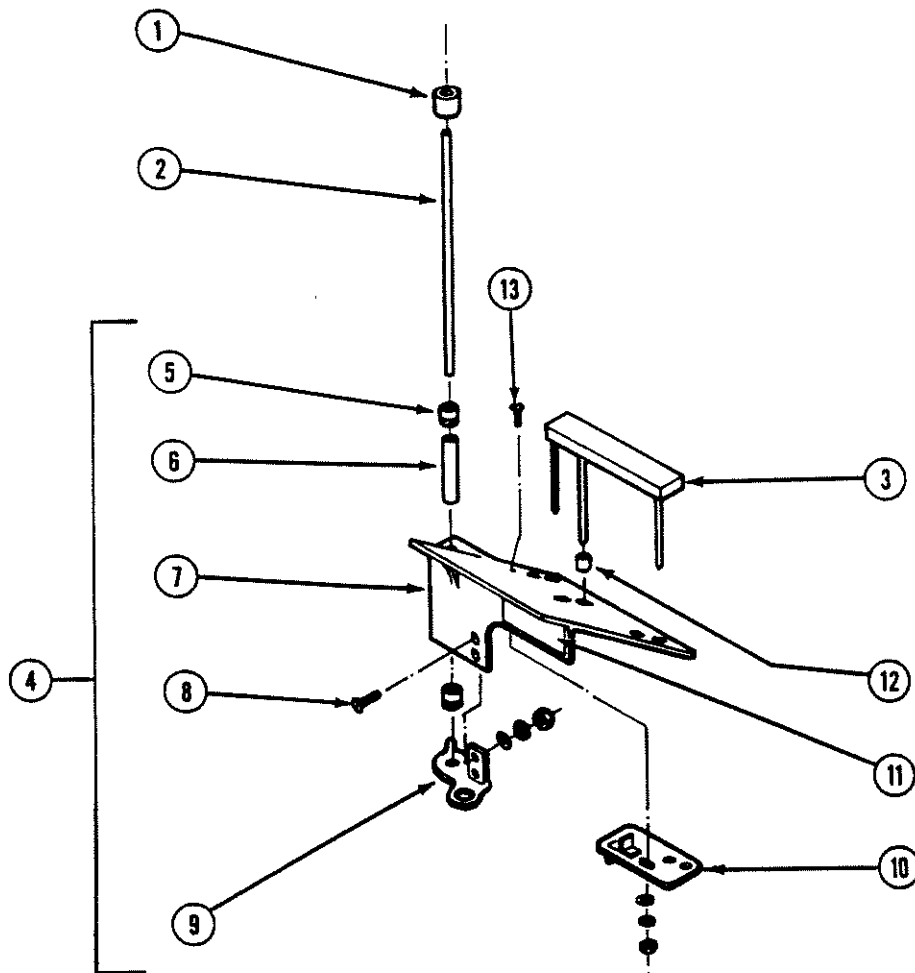
5 Oz. Hopper Bottom, ungrooved- 2047

~~5 Oz. Hopper Bottom, grooved- 2421~~

*No need for this
5oz don't come
w/pinned adapter plate*

Give a copy of this quick reference guide to your customers for fast referral when they order parts.

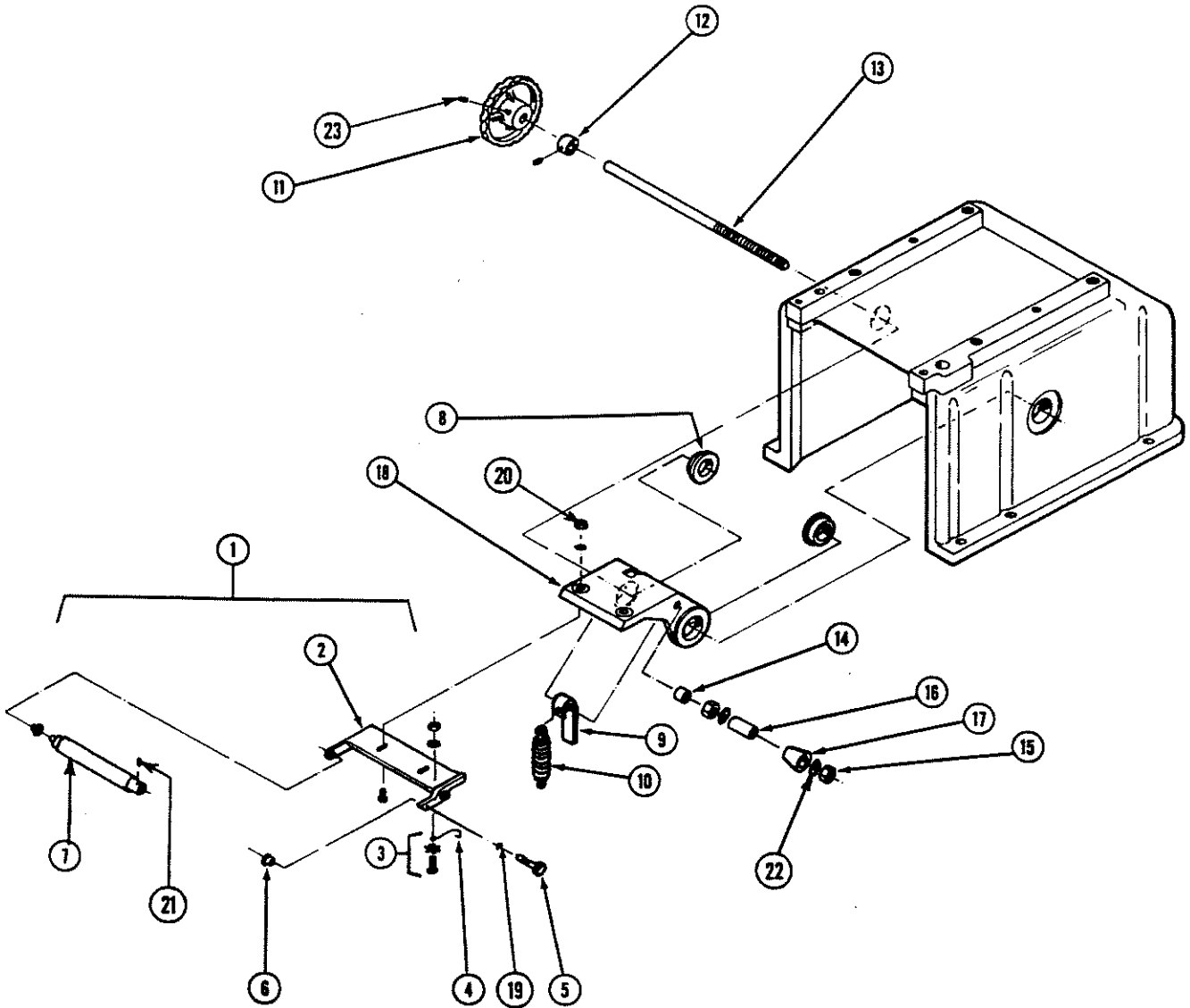
PAPER FEED



ITEM		QTY	PART NUMBER
1	Paper Feed Stop	1	2309
2	Shaft, Paper Plate	1	2087
3	Guide, Paper	1	2210
4	Paper Plate, (Incl. #5-13)	1	2090
5	Bushing	2	2454
6	Spacer, Bushing	1	2173
7	Plate, Paper	1	2592
8	Bolt Assortment	2	2715
9	Latch Plate	1	7229
10	Guide Plate:		
	Serial #23,447 and below	1	2089
	Serial #23,448 and above	1	2589
11	Decal, Paper Plate	1	2253
12	Bushing	2	2072
13	Screw Assortment	2	2714

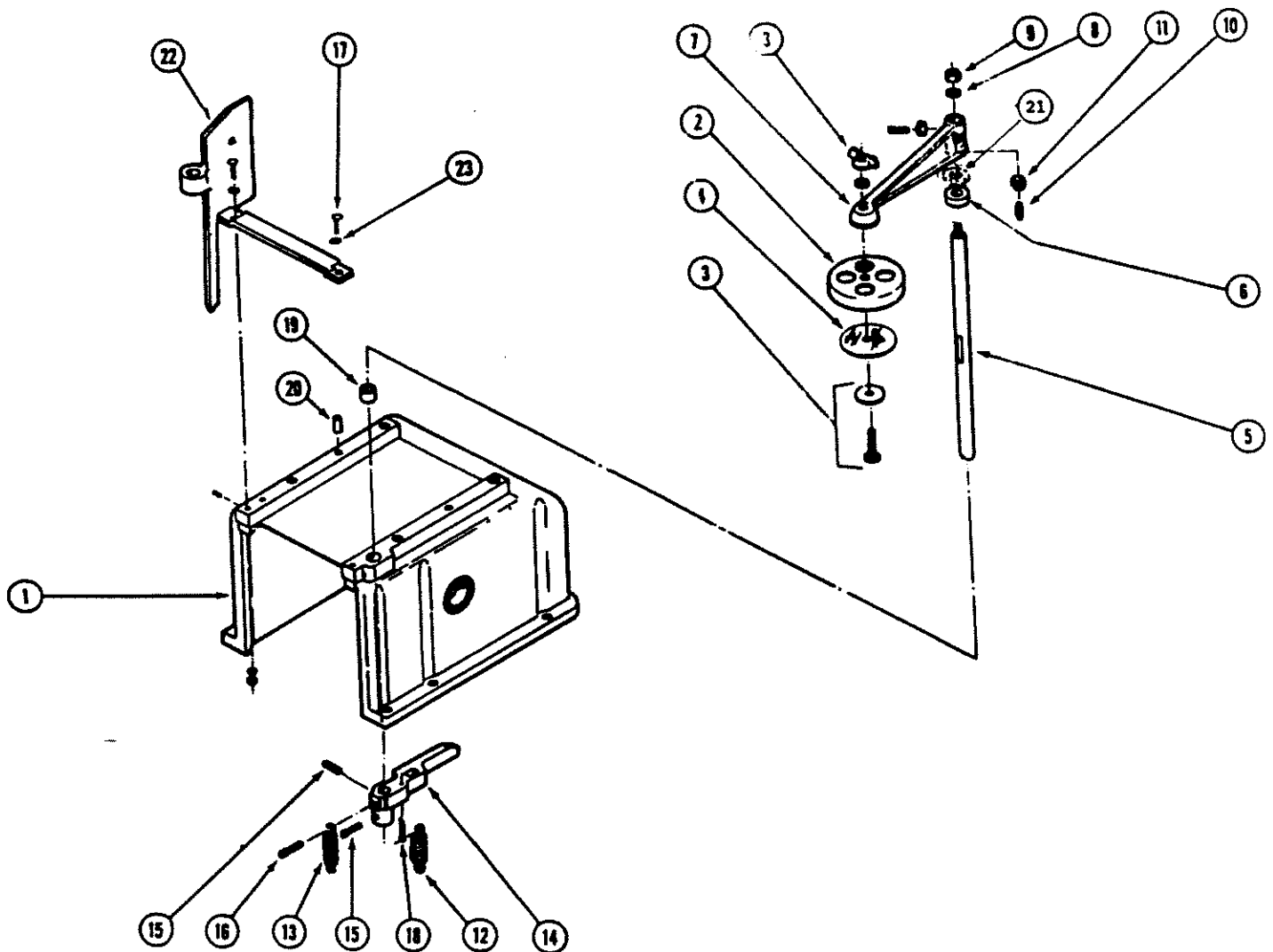


PAPER ROLLER



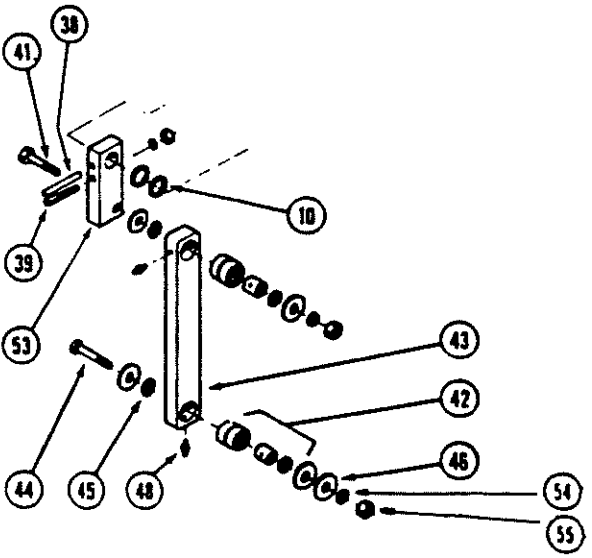
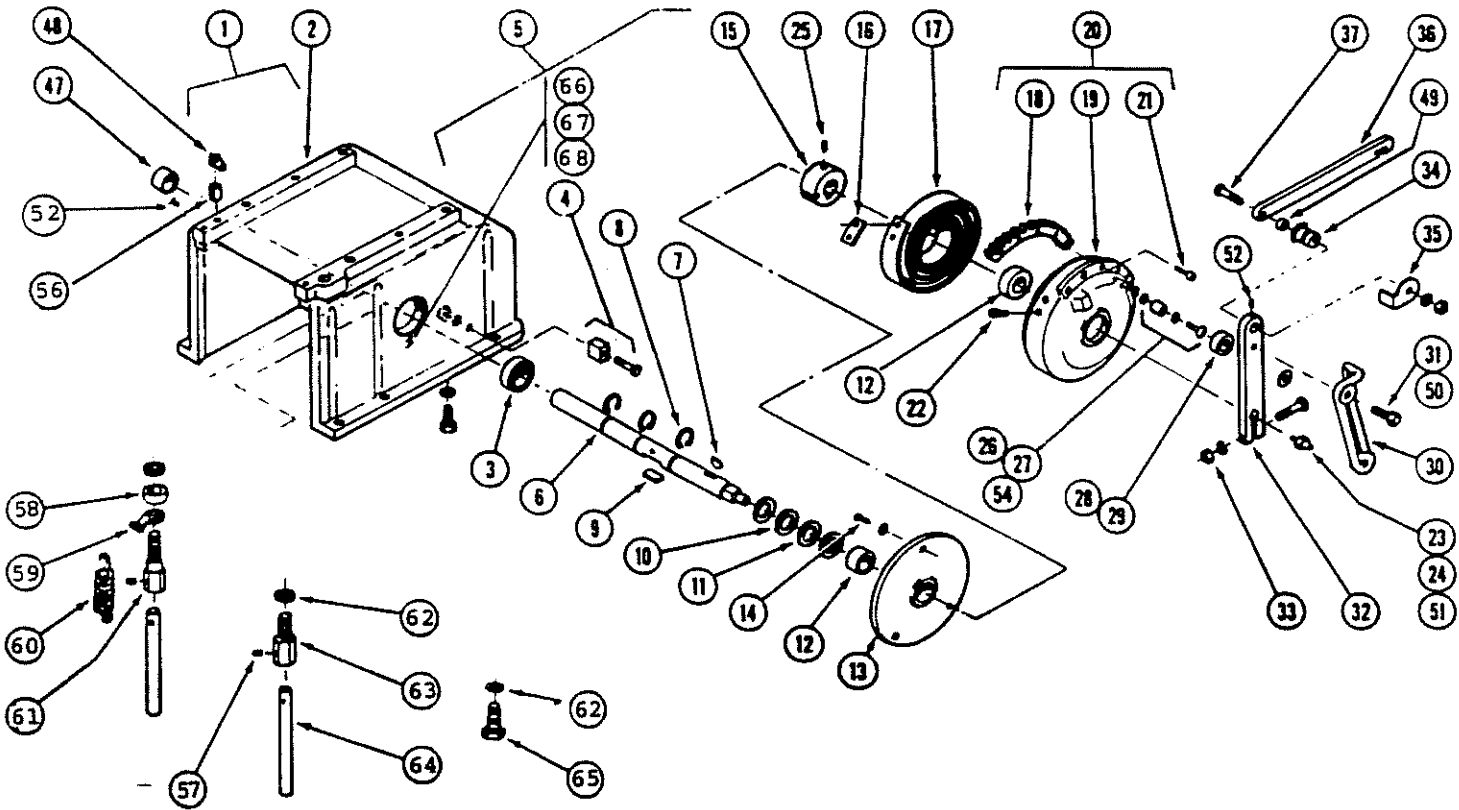
<u>ITEM</u>	<u>QTY</u>	<u>PART NUMBER</u>	<u>ITEM</u>	<u>QTY</u>	<u>PART NUMBER</u>
1 Paper Pick-up Roller Assy (Incl Item # 2-7 & 19)	1	2377	12 Collar & Set Screw	1	473
2 Frame with Bearings (#6), pawl, & rivet	1	2386	13 Rod, Adjustment	1	2081
3 Pawl Spring Asst.	1	2484	14 Sleeve	1	2119
4 Pawl Spring Only	1	2384	15 Jam Nut	2	736 0083 23
5 Ratchet	1	2373	16 Bushing, Adj. Cone	1	2082
6 Bearing	2	2374	17 Cone, Adjustment	1	2079
7 Paper Roller with Cover & Set Screw (#21)	1	2380	18 Paper Release Arm (Incl. # 8)	1	2175
8 Bushing	2	2078	19 Washer	1	2382
9 Connector, Spring	1	2112	20 Screw Assortment	2	2713
10 Spring	1	2076	21 Set Screw	1	712 0140 99
11 Adjusting Knob	1	2066	22 Internal Lock Washer	2	756 0006 40
			23 Set Screw	1	714 0345 93

UPPER FRAME & K.O. ARM



ITEM	QUANTITY	PART NO.	ITEM	QUANTITY	PART NO.
1 Upper Frame	1	2001	8 Washer	1	1224
2 Knock-Out Cup Assembly, Rd. Single Hole, Incl. Items: 3, 4, and spacer if required	1	2180	9 Nut	1	736 0052 23
Knock-Out Cup Assembly Multiple Hole, Incl. Items: 3, 4, and spacer if required	1	2480	10 Screw	2	7161032 830
K. O. Cup Assy, Square; Incl. 3, 4, & Spacer if req'd.	1	2487	11 Nut, Jam	2	736 0083 23
K. O. Cup Assy, non-round; Incl. 3, 4, & Spacer if req'd.	1	2466	12 Spring, Retraction	1	500 0556
3 Bolt Assortment	1	2182	13 Spring, Helper	1	2111
4 Disc, 3 1/4"	1	1144	14 Lift Arm, Paper Release	1	2080
Disc, 3"	1	2164	15 Set Screw	2	715 0337 93
5 Rod, Knockout - Long (for serial #23, 448 & up or numbers followed by "A")	1	2348	16 Set Screw, Sq. Hd. & Locknut	1	2277
6 Bumper	1	2238	17 Screw	2	714 1404 40
7 Knock-out Arm, Std.	1	2061	18 Cotter Pin	1	762 1041 91
Knock-out Arm, Mod. (for Mold Plates with Offset or Multiple Holes).	1	2361	19 Bushing, Knock-out Rod	1	2069
			20 Dowel Pin	2	2098
			21 Washer	1	2159
			21 Washer, Mod. Arm Only	4	2159
			22 Support, Hinge	1	2742
			23 Lockwasher	2	754 0006 40

MAINSHAFT & SPRING



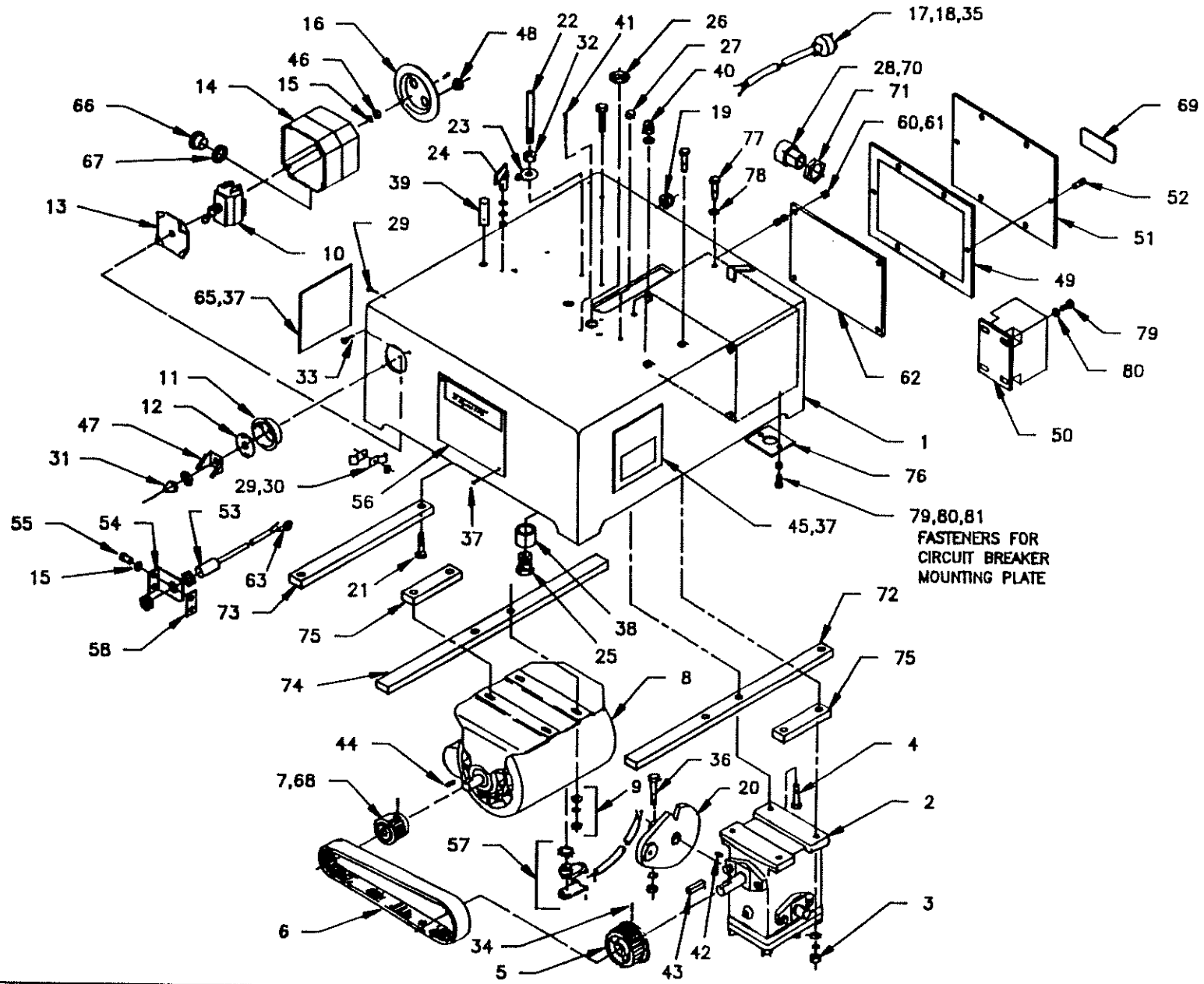
MAINSHAFT & SPRING

ITEM	QUANTITY	PART NO.	ITEM	QUANTITY	PART NO.
1 Upper Frame Assy. Incl. Items 2, 3, 4, 47, Items 1, 2, 14, 15, 16, 17, 18, 19, 20, 21, 23, 24, 25 From Paper Feed Assembly	1	2101	30 Torsion Spring, Std. Torsion Spring, Heavy Duty (6-7-8 oz. patty weights)	1 1	2136 2226
2 Upper Frame	1	2001	31 Bolt, Torsion Spring	1	2178
3 Bearing, Roller, Main Shaft	1	2002	32 Lever Arm	1	2319
4 Drive Gear Stop Assortment	1	2179	33 Bolt Assortment	1	2702
5,6 Main Shaft & Drive Arm Assy. Must be ordered as an Assy. Incl. Items 6, 33, 39, 38, & 9.	1	2315	34 Lever Arm, Eccentric	1	2129
		7695	35 Stop, Operating Arm	1	2257
7 Key, Woodruff	1	493	36 Operating Arm	1	2053
8 Snap Ring	3	778 0013 93	37 Bolt Assortment	1	2183
9 Plate, Bearing .062	1	2412	38 Taper Pin	1	2206
Plate, Bearing .050	1	2414	39 Lock Pin Assortment	1	2188
Plate, Bearing .040	1	2416	41 Bolt Assortment, Upper	1	2358
10 Washer, Shim, .010	AR	2396	42 Roller Bearing Assembly	2	2457
Washer, Shim, .018	AR	2401	43 Connecting Rod	1	2298
Washer, Shim, .062	AR	2398	44 Bolt Assortment, Lower	1	2349
Washer, Shim, .089	AR	2399	46 Washer, Brg. Retainer	4	2363
11 Retaining Washer	4	2063	45 Washer, Brg. Retainer Shim Washer	4	400 0834
12 Bushing	2	2007	47 Bushing, Main Shaft	1	2102
13 Plate, Back, w/bushing	1	2011	48 Grease Fitting	3	2094
14 Screw Assortment	3	2176	49 Bushing, Operating Arm	1	2064
15 Spring Hub (see below)*	1		50 Hex, Jam Nut	1	736 0083 23
16 Spring Plate	1	2008	51 Washer	1	754 0001 91
17 Spring, #17 (red) for Shaft #7	1	2005 07	52 Set Screw	1	714 0344 99
Spring, #18 (yel.) for Shaft #8	1	2005 08	53 Internal L/washer	1	756 0006 40
Spring, #19/20 (blue) Shaft #9	1	2005 09	54 Split Lock Washer	1	758 0005 91
Spring, #21 (green) Shaft #10	1	2005 10	55 Nut	1	748 0051 53
Spring, #22/23 (or.) Shaft #11	1	2005 11	56 Bushing	1	2105
Spring, #24/25 (wh.) Shaft #12	1	2005 12	57 Set Screw	3	714 0344 99
Spring, #26/27 (bk.) Shaft #13	1	2005 13	58 Collar	1	2596
18 Gear Segment	1	2307	59 Spring Clip	1	2513
19 Housing, Spring	1	2308	60 Paper Clip/Spring	1	2093
20 Housing & Gear Assembly	1	2306	61 Insert	1	2595
21 Screw	5	724 0703 83	62 Washer	2	2495
22 Set Screw	2	714 1003 99	63 Insert	1	2395
23 Grease Fitting, Long	1	2406	64 Guide Rod	2	2599
24 Sleeve	1	2305	65 Insert	1	2095
25 Set Screw	1	716 0536 99	66 Set Screw	1	3738
26 Spring Stop Assortment	1	2215	67 Set Screw	1	3739
27 Screw	1	716 1202 83	68 Steel Ball	1	2221
28 King Roller (for heavy duty torsion spring only)	1	2268			
29 Washer, King Roller	1	2468			

* HUB (for #7, #10 or #11 spring) 7692

HUB (for #8, #9, #12 or #13 spring) 7693

DRIVE



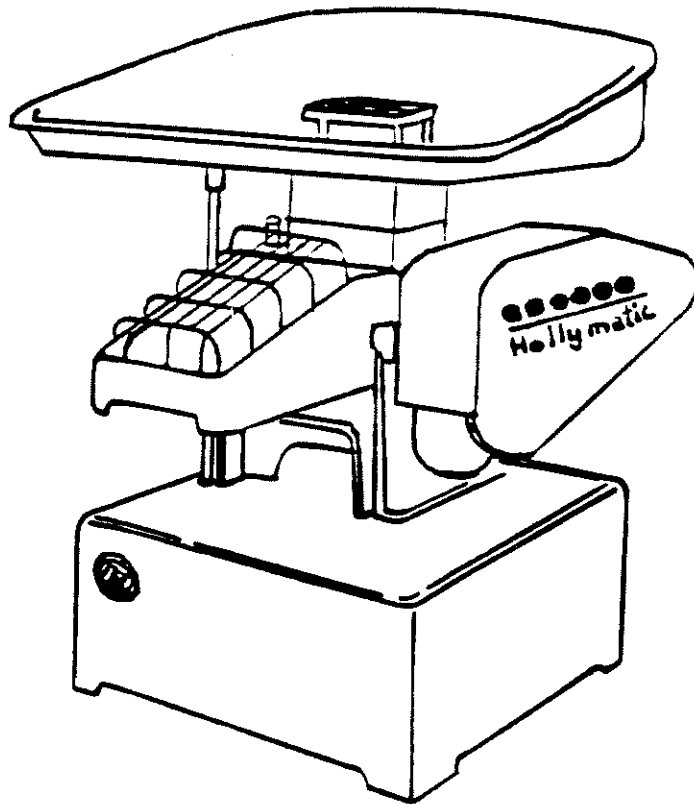
DRIVE

ITEM	QTY	PART NUMBER	ITEM	QTY	PART NUMBER
1	1	7752	39	3	2316
2	1	2353	40	1	2318
3	2	2245	41	2	762104191
4	2	2242	42	1	500-0133
5			43	1	500-0137
			44	1	500-0134
	1	2163	45	1	2290
	1	2382	46	2	733005123
	1	2662	47	1	7148
6			48	1	840-8221
	1	2161	49	1	7764
	1	2366	50		
7				1	7573
	1	2162		1	7575
	1	2664		1	7556
8	1	SPECIFY		1	7573
9	3	2184		1	7756
10	1	7147	51	1	7756
11	1	2429	52	6	713021940
12	1	2723	53	1	244-0376
13	1	2427	54	1	7709
14	2	2687	55	2	712041640
15	4	753000840	56	1	900-0103
16	1	2675	57	1	2701
17	1	2674	58	1	2996
18		(SEE ELECTRICAL COMPONENTS)	59		
19	1	2149	60	4	713060240
20	1	2354	61	12	733005140
21	2	2313	62	1	7760
22	1	2115	63	1	500-1136
23	1	2114	64		
24	1	7230	65	1	900-0622
25	1	2167	66	1	7796
26	1	2284	67	1	7711
27	1	2117	68	1	715034599
28	2	400-1148	69	1	900-0609
29	1	2720	70	1	860-0522
30			71	3	860-0525
	1	200-0749	72	1	7754
	2	500-0930	73	1	7757
31	1	500-1167	74	1	7758
32	1	736005223	75	2	7762
33	2	713050523	76	1	7785
34	1	714034593	77	1	715110240
35		(SEE ELECTRICAL COMPONENTS)	78	1	755000140
36	1	2346	79	4	712031640
37	12	500-0996	80	4	752000640
38	1	7780	81	2	732005140

○ ○ ○ ○ ○ ○

HOLLYMATIC

SUPER



OPERATORS MANUAL – PARTS LIST

PLEASE READ THIS MANUAL INCLUDING ALL SAFETY INSTRUCTIONS
BEFORE ATTEMPTING TO OPERATE THIS MACHINE
PROPER GUARDS AND SAFETY DEVICES ARE INSTALLED FOR YOUR SAFETY
DO NOT OPERATE THE MACHINE UNLESS ALL GUARDS ARE IN PLACE

(C) HOLLYMATIC CORPORATION MARCH, 1995
ALL RIGHTS RESERVED

HOLLYMATIC CORPORATION
600 E. PLAINFIELD ROAD
COUNTRYSIDE, ILLINOIS 60525
PHONE: 708-579-3700
FAX: 708-579-1057

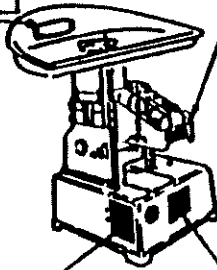
0500 0194 **WARNING**
KEEP HANDS
FROM UNDER GUARD
Do Not Operate Without Guards

900 0621

WARNING
CAUTION
KEEP HANDS
FROM UNDER GUARD
DO NOT OPERATE WITHOUT GUARDS

WARNING
CAUTION
DO NOT OPERATE
THIS MACHINE UNLESS
ALL 3 GUARDS
ARE IN
PLACE.

900 0622

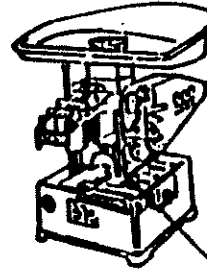


900 0103

WARNING
DO NOT OPERATE
WITHOUT GUARDS
READ OPERATOR'S MANUAL
BEFORE RUNNING MACHINE
UNPLUG MACHINE BEFORE
CLEANING OR ADJUSTING
KEEP HANDS AWAY FROM
MOVING PARTS

WARNING
KEEP HANDS AWAY
FROM MOVING PARTS

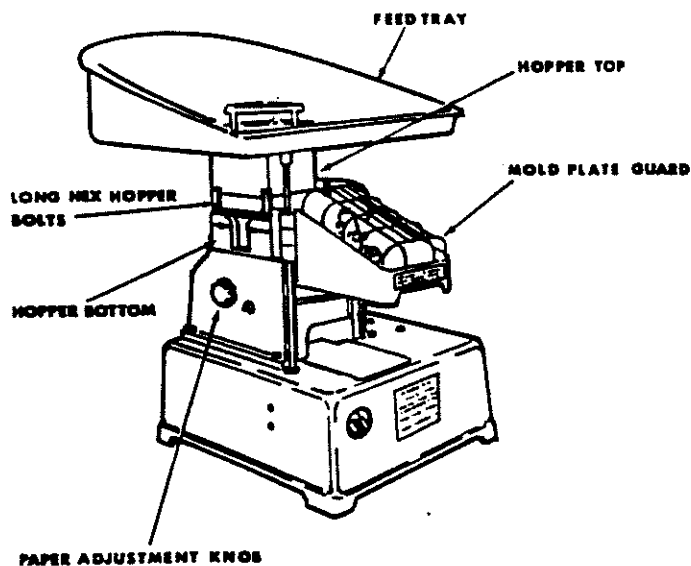
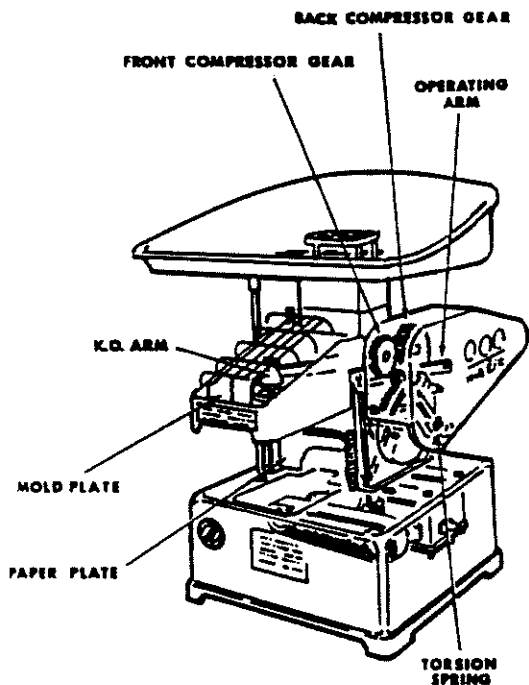
900 0601



900 0623

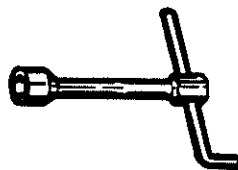
WARNING
CAUTION
DO NOT USE
FINGERS TO
CLEAN MOVING
MOLD PLATE
UNPLUG POWER CORD
BEFORE CLEANING OR
ADJUSTING THE
MACHINE.

The Hollymatic Super model automatically molds and papers meat patties. Product is placed in feed tray and fed into hopper. The Super then molds, papers and stacks the finished product. The Super was designed for ease of operation and maintenance. For long machine life, become familiar with the machine.



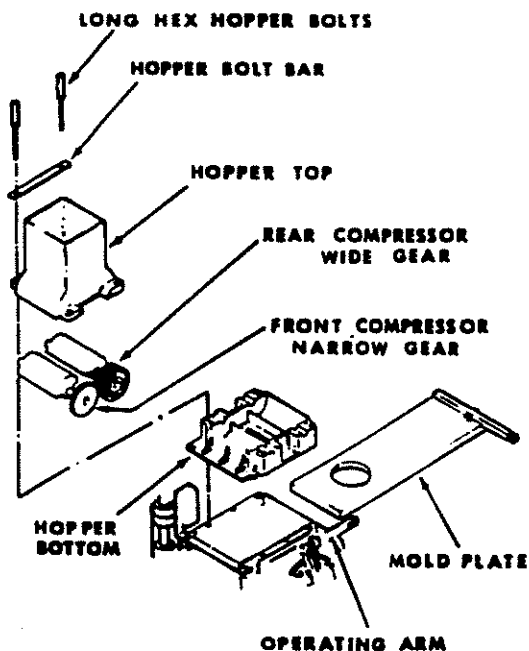
SET-UP

The Super is shipped in two cartons. The first carton contains the patty molding machine, mold plate guard, gear guard, and one wrench. The second carton contains the feed tray only. The T-wrench is to remove hopper bolts.



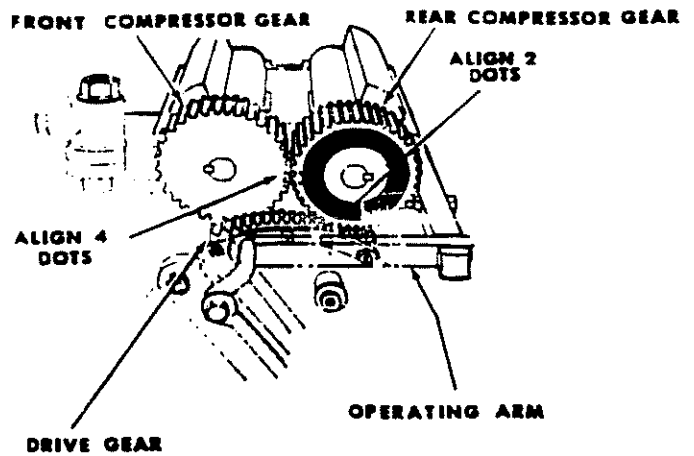
T - WRENCH
(0000-3140)

The factory has coated the hopper bottom and mold plate with grease. The grease must be removed before operating. Cycle the Super until mold plate is fully forward, so knock-out arm drops to its lowest position and comes part way up. Using the T-wrench, remove hopper bolts and lift off hopper top. Lift compressors from hopper bottom and remove hopper bottom. Disconnect operating arm and remove mold plate from upper frame.

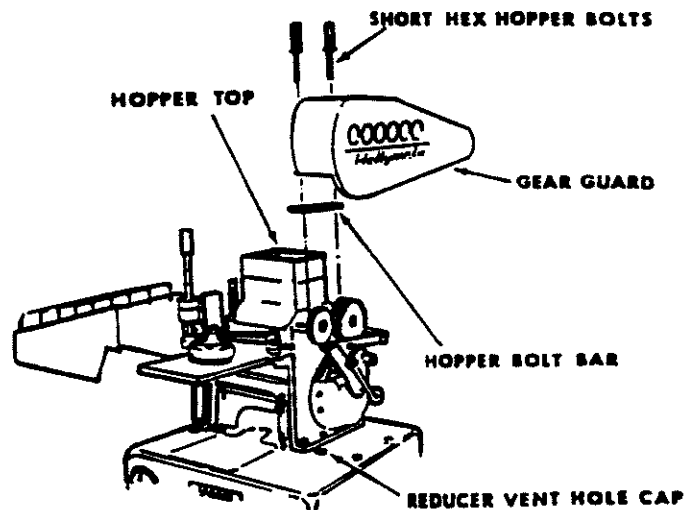


1. Wash the greased parts in warm soap and water until free of grease. Cool parts with cold water before re-assembling. Oil with Holly Fluid. Lubricate compressor shafts with Holly Lube. This same procedure may be used to clean and lubricate the machine after running patties.

2. To reassemble, replace mold plate, operating arm and hopper bottom. Align single red dot on rear compressor gear with single red dot on drive gear. Then align the two red dots on front compressor gear with matching dots on rear compressor gear. **IMPORTANT:** Gears must be carefully aligned as above to avoid possible damage to machine or injury to operator.



3. Replace hopper top. Place gear guard over gears and secure with hex bolts. Mount feed tray on hopper top.

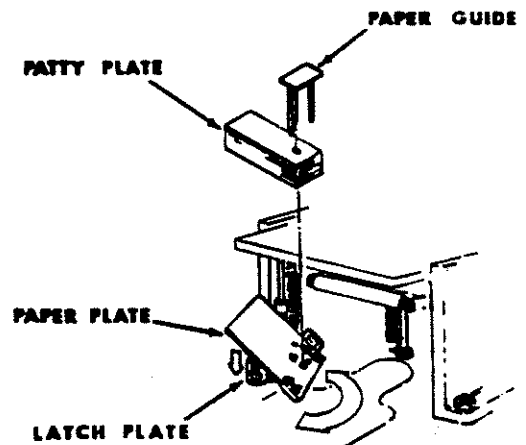


WARNING

DO NOT OPERATE MACHINE WITHOUT ALL GUARDS IN PLACE.

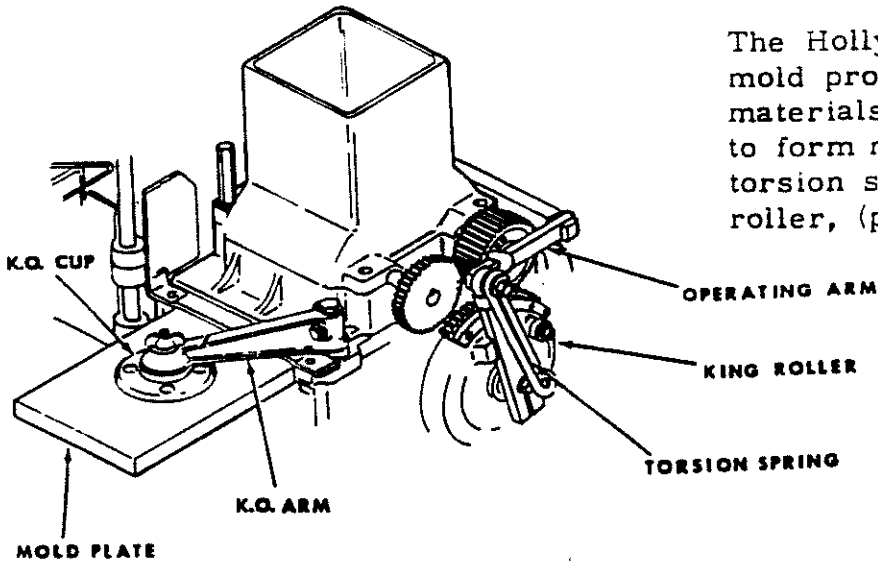
4. Remove reducer vent hole cover. Push stiff wire through vent hole under tape to remove wax plug. **IMPORTANT:** Failure to do so will cause oil leakage due to internal pressure build-up.

5. Load automatic paper feed. Open paper pack and place paper in dispenser. Press down on latch plate and swing out paper plate. Place center post of paper guide in hole thru paper. The end posts are placed in bottom holes in paper feed for large (5-3/16") paper, upper holes for 4-1/2" paper. Pull the top sheet 1/2" forward from guide. This must be done for each new pack so first patty will be papered. Swing paper plate back to operating position.



6. Center the knock-out cup in the mold plate hole.

The Hollymatic Super was designed to mold products from a wide variety of materials. For 8 oz. portions and hard to form materials, use the heavy duty torsion spring, (part #2226), and king roller, (part #2268).



OPERATION OF THE SUPER

The Super is equipped with a safety interlock system. For the machine to operate, the feed tray must be mounted, and the mold plate guard must be closed.

Lifting the feed tray or opening the mold plate guard will shut the Super off. To re-start, replace the feed tray, close and latch the mold plate guard. Press the on-off switch to "on".

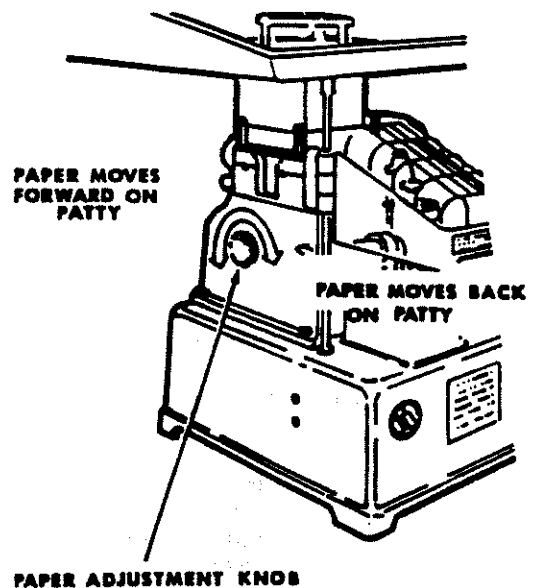
Place product in feed tray. Push some product into hopper. Do not pack. Meat must be free to move in the hopper. Run the machine. As product is molded and stacked, refill hopper from feed tray. Center the paper on patty by using adjustment knob on left hand side of machine. Turn clockwise to move paper forward under patty. Turn counter-clockwise to move paper back.

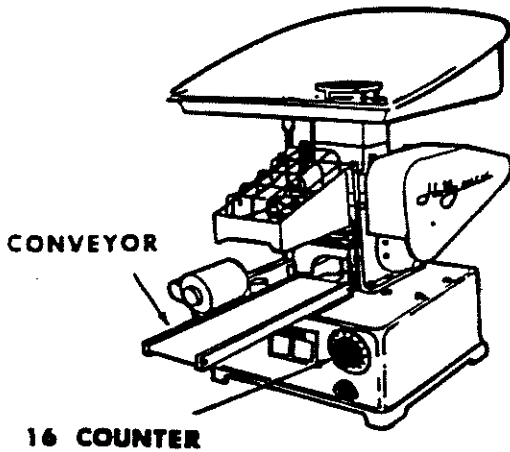
As the mold plate moves back and forth to form patties, a thin coating of product is spread over its surface. This coating may accumulate on the edges of the K. O. Cup or in front of the hopper bottoms.

WARNING

NEVER ATTEMPT TO REMOVE THIS EXCESS COATING OR LEAKAGE WHILE THE MACHINE IS RUNNING. THE MOVING PARTS CAN CAUSE SEVERE AND PERMANENT INJURY.

It is recommended that the leakage be ignored until the machine is taken apart for washing, or the mold plate is changed.





If your Hollymatic Super is equipped with the optional Counter and conveyor, operation is the same as above. Simply set dial of number of patties desired in each stack. The patties then stack on the belt until the predetermined number is reached. The conveyor then moves about seven inches and stops. The cycle is then repeated. The Counter allows two to sixteen patties per stack, or conveyor can run continuously.

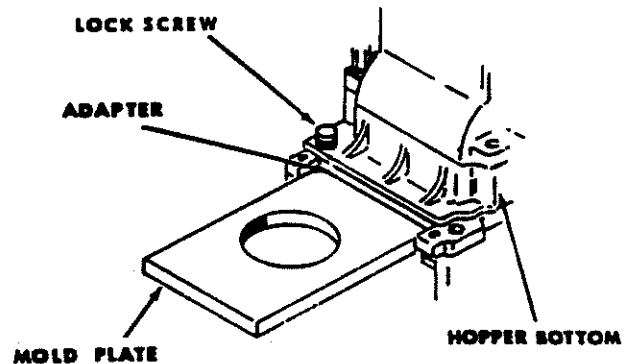
MOLD PLATE CHANGE

Always disconnect the machine from its power source so that it cannot be started accidentally. Mold plates of the same thickness may be interchanged without removing the hopper assembly: Release the operating arm and pull out mold plate from the rear. Insert new mold plate from rear and connect operating arm.

IMPORTANT: Knock-out cup must also be changed to match new mold plate.

When changing mold plate, use corresponding adapter plate.

The adapter plate is retained by a lock screw, (except 5/8" thick, which has pin).



PARTS KIT

To make immediate repairs on the Super, it is recommended that the user have a Parts Kit, a #2020 Parts Kit, with standard knock-out arm, or a #2620 Parts Kit with modified knock-out arm. Use #2620 on Supers where the hole in the mold plate is offset or with multiple hole mold plates. Except for the knock-out arm, both kits are identical. Each kit contains:

- (1) 2107, Hopper Bolt with washer (long hex)
- (1) 2227, Hopper Bolt with washer (short hex)
- (1) 2052, Mold Plate Bracket
- (2) 2708, Bolt Assortment (for 3/16, 1/4, & 5/16" plates)
- (2) 2709, Bolt Assortment (for 3/8, 5/8, & 3/4" plates)
- (2) 2710, Bolt Assortment (for 1/2" plates)
- (1) Knock-out Arm
#2061 for Kit No. 2020

- (2) 2238, Bumpers (for KO Arm)
- (2) 2182, Bolt for KO Cup, complete with washers and wing nut
- (6) 500-0555, KO Springs
- (6) 2111, KO Helper Springs
- (1) 2277, Long Set Screw, Sq. Hd. (for helper spring)
- (1 box*), 1144, Disc. Treated Paper, (KO Cup)
- (6) 2093, Paper Plate Springs

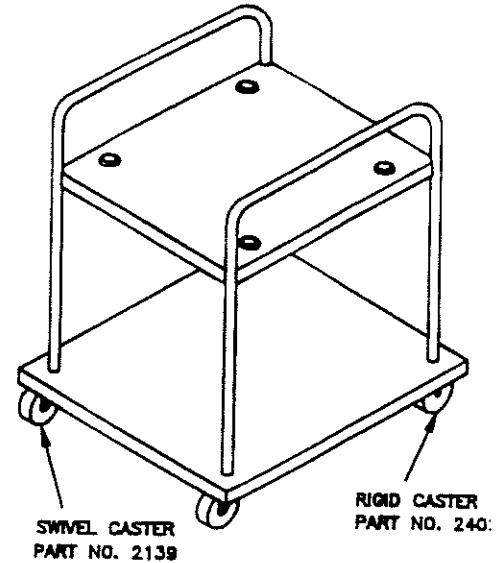
*350 Sheets per box.

ACCESSORIES

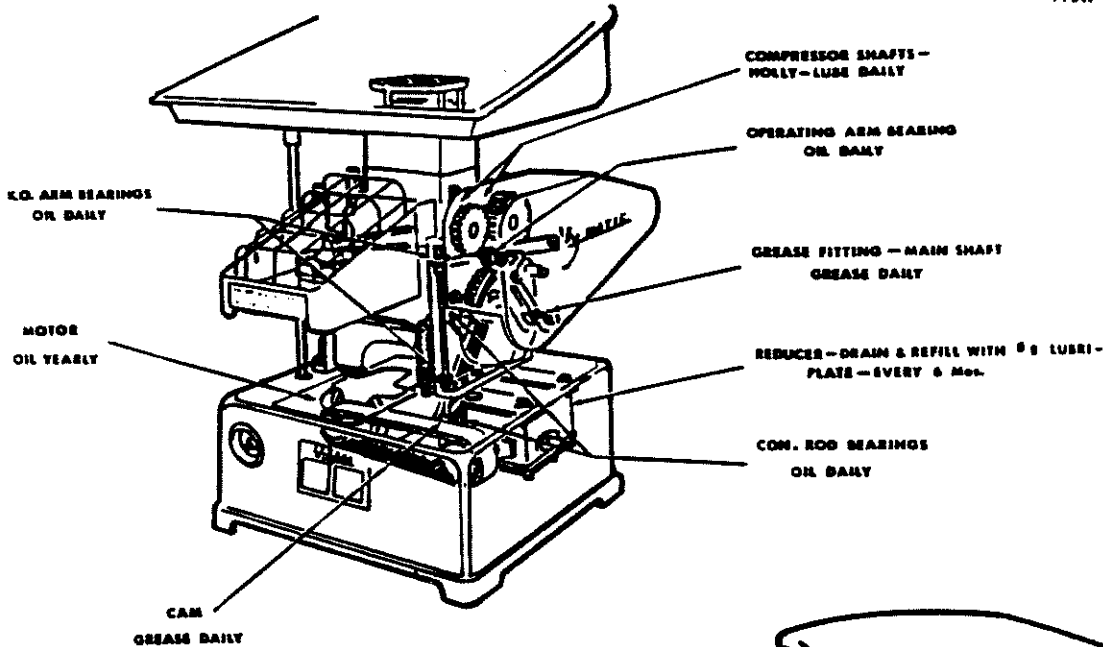


The Hollymatic Super is designed to use Holly accessories, as Holly Lube, Holly Fluid, and the Patty Pak container. See your dealer for information.

EASY WAY STAND COMPLETE
PART NO. 2533



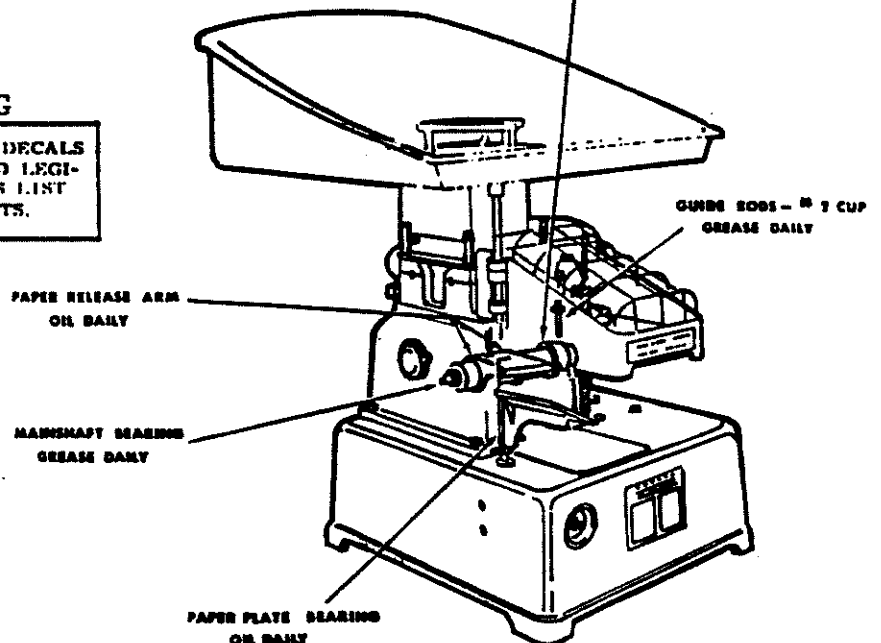
WARNING
MAINTENANCE
DISCONNECT MACHINE BEFORE DOING ANY WORK ON IT



CASTER FASTENERS
5/16-24 x 5/8 HHCS
PART NO. 725050240
5/16 INTERNAL LOCKWASHER
PART NO. 755000840

ADJUSTMENT CONE - GREASE SURFACE
WEEKLY; ADJ. CONE BEARING -
OR MONTHLY

WARNING
BE SURE WARNING DECALS
ARE IN PLACE AND LEGI-
BLE. SEE PARTS LIST
FOR REPLACEMENTS.



TRUBLE SHOOTING

1. Super won't start:

- A. Make sure Super is plugged into power source.
- B. With safety interlock, feed tray must be in place. Mold plate guard must be closed.

2. Super stops:

Incorrect assembly. To remedy, turn off switch and remove plug from power source. Remove feed tray. Carefully tilt Super on its back. Turn pulleys backward (clockwise) by hand until "unjammed".

Return machine to upright position.

A. Jammed Knock-out cup: See above

If K.O. cup is caught in mold plate, remove K.O. cup.

Check that mold plate is undamaged.

Replace damaged K.O. cup with undamaged cup. Make sure K.O. cup is correct diameter, and correct spacer (or no spacer if required) on its top.

Align as shown on page 4.

B. Jammed Compressors: See above

Remove hopper top and compressors.

Connect the Super to power source, close mold plate guard, and press down on feed tray sensor to run mold plate to its fully forward position.

Disconnect Super from power source.

Replace compressors with dots aligned on compressor gears and spring housing.